

Adolphe Adam

Bravour-Variationen

über Ah, vous dirai-je, maman

arr. Adrian Wehlte

Allegro moderato

Flöte 1

Flöte 2

Violoncello

5

10

p

m

p

pizz.

mf
arco

p

mf

15 Allegro

f

f

f

This system contains measures 15 through 18. The tempo is marked 'Allegro' and the dynamics are 'f' (forte). The music features a complex rhythmic pattern with many sixteenth notes in the upper staves and a more active bass line.

19 Andante dolce

mp

mp

mp

This system contains measures 19 through 21. The tempo is marked 'Andante dolce' and the dynamics are 'mp' (mezzo-piano). The music is slower and more melodic, with a prominent sixteenth-note figure in the upper staves.

22

This system contains measures 22 through 24. The music continues with the melodic and rhythmic motifs established in the previous systems.

25

6 6 6 6 6 6

This system contains measures 25 through 28. It features a series of sixteenth-note runs in the upper staves, with the number '6' written below each measure. The bass line provides a steady accompaniment.

27 *a tempo*

rit. 6

rit.

rit.

rit.

This system contains measures 27 and 28. It features three staves: treble, alto, and bass. The key signature has one sharp (F#). Measure 27 includes a sixteenth-note triplet in the treble staff, marked with a '6' above it. The tempo is 'a tempo'. The word 'rit.' (ritardando) is written below the first two staves and the bass staff.

29

rit.

rit.

This system contains measures 29 and 30. It features three staves: treble, alto, and bass. The key signature has one sharp (F#). The word 'rit.' is written below the first two staves and the bass staff.

31 *Allegro*

f

f

f

This system contains measures 31 and 32. It features three staves: treble, alto, and bass. The key signature has one sharp (F#). The tempo is 'Allegro'. The dynamic marking '*f*' (forte) is present in all three staves.

35 *Meno Allegro*

f

6 6 6 6 6 6

This system contains measures 35, 36, 37, and 38. It features three staves: treble, alto, and bass. The key signature has one sharp (F#). The tempo is 'Meno Allegro'. The dynamic marking '*f*' is in the treble staff. The bass staff contains sixteenth-note triplets, each marked with a '6' above it.

Adolphe Adam

Bravour-Variationen

über Ah, vous dirai-je, maman

arr. Adrian Wehlte

Flöte 1

p *Andante moderato* *mf*

5

10

15

Allegro

f

19

Andante
dolce

mp

21

Adolphe Adam

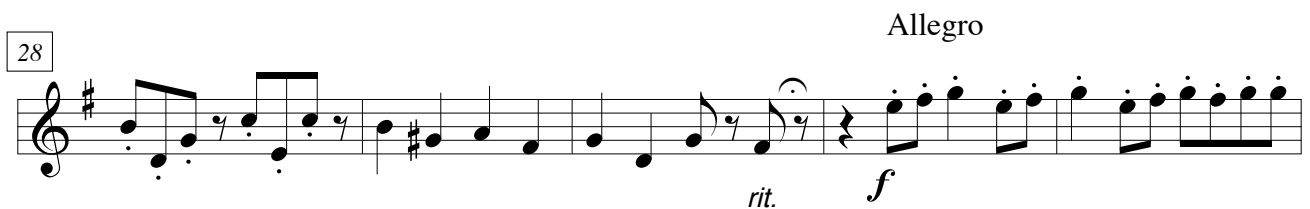
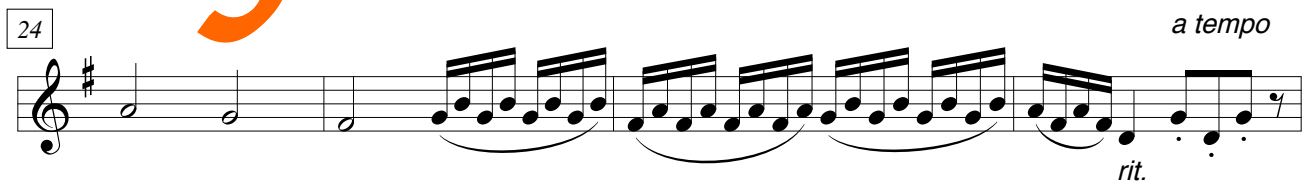
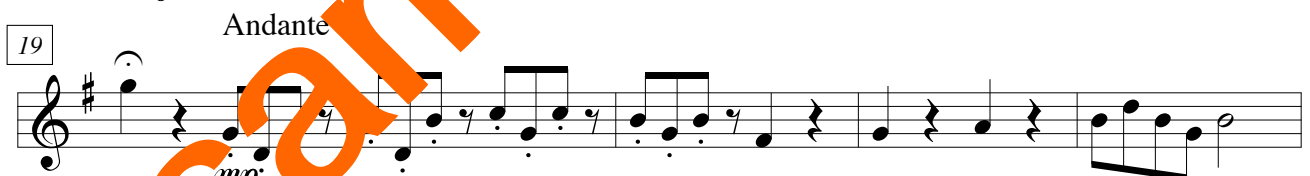
Bravour-Variationen

über Ah, vous dirai-je, maman

arr. Adrian Wehlte

All. moderato

Flöte 2



Adolphe Adam

Bravour-Variationen

über Ah, vous dirai-je, maman

arr. Adrian Wehlte

Violoncello

pizz.
p

arco
mf

Andante moderato

5

10

15 *Allegro*

18 *Andante*
mp

23 *a tempo*
rit.

28 *Allegro*
rit. *f*

The image shows a musical score for Violoncello. It consists of seven staves of music. The first staff starts with a bass clef, a key signature of one sharp (F#), and a 4/4 time signature. The music begins with a pizzicato section marked 'pizz.' and 'p', followed by an arco section marked 'arco' and 'mf'. Above the first staff, the tempo is marked 'Andante moderato'. The second staff is marked with a box containing the number '5'. The third staff is marked with a box containing the number '10'. The fourth staff is marked with a box containing the number '15' and the tempo marking 'Allegro'. The fifth staff is marked with a box containing the number '18' and the tempo marking 'Andante', with a dynamic marking 'mp' below it. The sixth staff is marked with a box containing the number '23' and the tempo marking 'a tempo', with a 'rit.' marking at the end. The seventh staff is marked with a box containing the number '28' and the tempo marking 'Allegro', with 'rit.' and 'f' markings below it. A large, diagonal orange watermark reading 'Probeseiten Sample pages' is overlaid across the entire score.

Adolphe Adam

Bravour-Variationen

über Ah, vous dirai-je, maman

arr. Adrian Wehlte

statt Cello:

Allegro moderato

Altflöte in G

p *mf*

5

11

Allegro

f

16

Andante

mp

20

25

a tempo

rit.

30

Allegro

rit. *f*